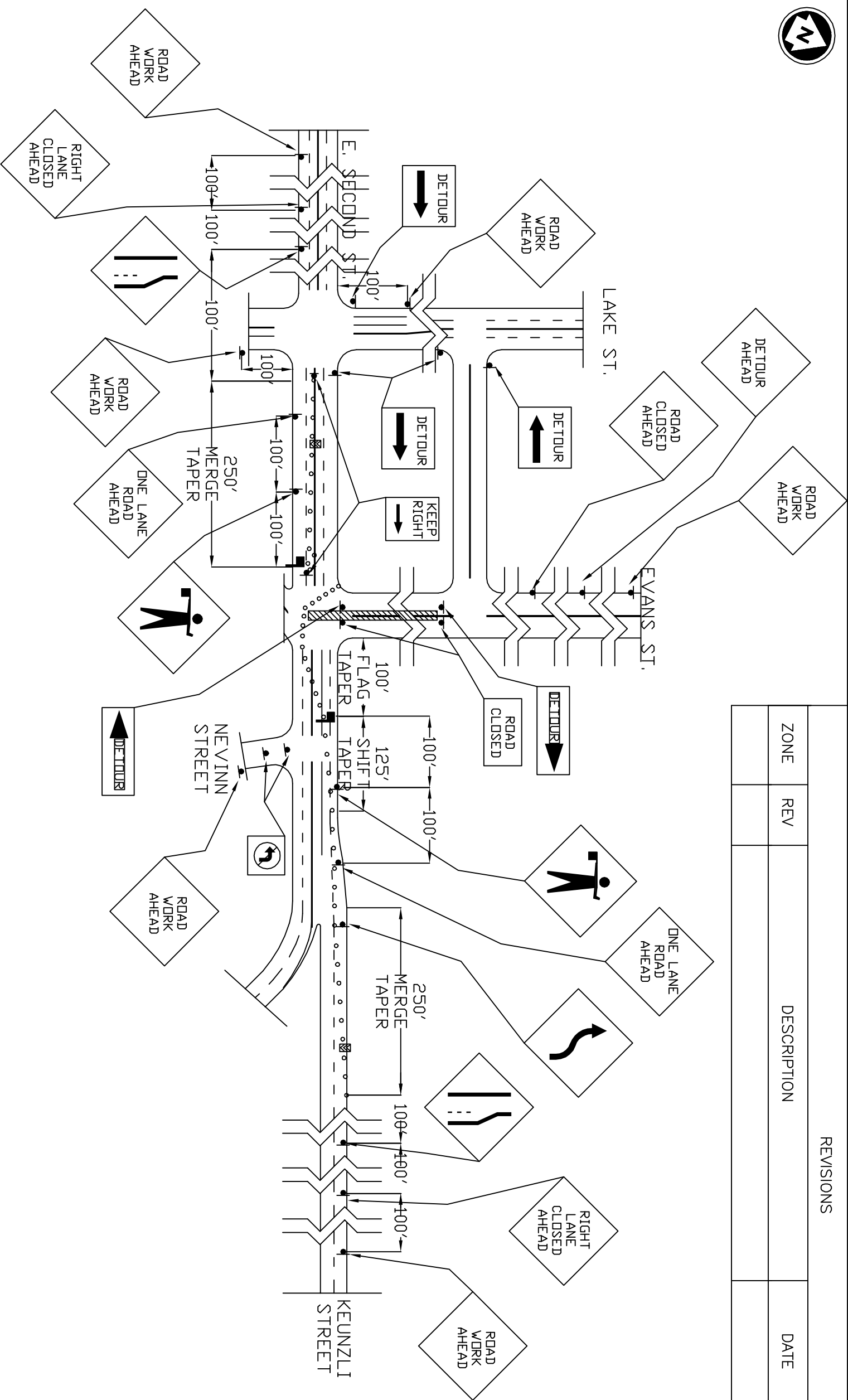




| REVISIONS | | DATE | APPROVED |
|-----------|-----|-------------|----------|
| ZONE | REV | DESCRIPTION | |
| | | | |



NOTES

- 1) TRAFFIC CONTROL TO BE IN COMPLIANCE WITH MUTCD, R1C STANDARDS, AND THE NDOT STANDARD DRAWINGS.
- 2) NDOT AND/OR THEIR REPRESENTATIVES RESERVE THE RIGHT TO MAKE MODIFICATIONS TO THE TRAFFIC CONTROL IN THE FIELD AS NECESSARY.
- 3) ALL ORANGE CONSTRUCTION SIGNS TO BE SHEETED WITH TYPE X FLUORESCENT ORANGE RETROREFLECTIVE SHEETING, AND ALL BLACK/WHITE REGULATORY SIGNS TO BE SHEETED WITH HIGH INTENSITY RETROREFLECTIVE SHEETING.
- 4) ALL CONSTRUCTION SIGNS, SIGN STANDARDS AND TRAFFIC CONTROL DEVICES TO BE COMPLIANT WITH NCHRP350 CRASH TEST STANDARDS.
- 5) CONTRACTOR TO MAINTAIN MINIMUM 11' TRAVEL LANES AT ALL TIMES.
- 6) PROJECT TRAFFIC CONTROL TO BE ADJUSTED AS NECESSARY TO COORDINATE WITH WORK IN PROCESS BY OTHER CONTRACTORS.

LEGEND

- CHANGEABLE MESSAGE SIGN
- TRAFFIC DRUM
- TEMPORARY IMPACT ATTENUATOR SET
- ARROWBOARD
- TYPE III BARRICADE
- CONSTRUCTION SIGN
- WORK AREA
- DENOTES SIGNALIZED INTERSECTION
- FLAGGER STATION
- TYPE "P" PCBR

PROJECT:
AAA BALLPARK
UTILITY LATERALS
AND CONNECTIONS

DRAWN BY: DAVID BULLOCK
ATISSA # 5956

PACIFIC RIM CONSTRUCTION
81 CONTINENTAL DRIVE
RENO, NV 89509
PH (775) 327-4330 FAX (775) 328-4331

TYPE OF WORK: INSTALL UTILITY LATERALS
WORK HOURS: 7:00am TO 5:00pm
START DATE: 8-11-08
DURATION OF WORK: 10 WORKING DAYS
CONTACT: SCOTT STROMBERG (775) 745-9316

SIZE FSCM NO.

DWG NO. PACRIM AAAPARK PH 5

REV

SCALE N/A

SHEET 5 OF 5

NEVADA BARRICADE AND SIGN CO., INC.
1300 MARIETTA WAY STE #102
SPARKS, NV 89431
TEL (775) 355-6755 FAX (775) 355-6744

